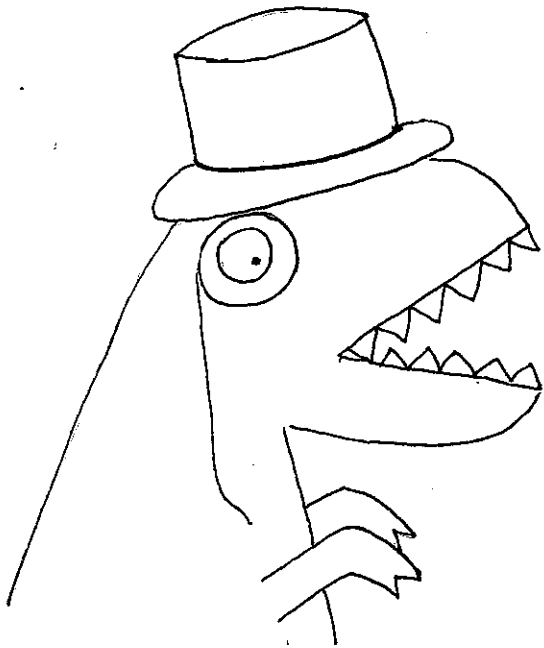
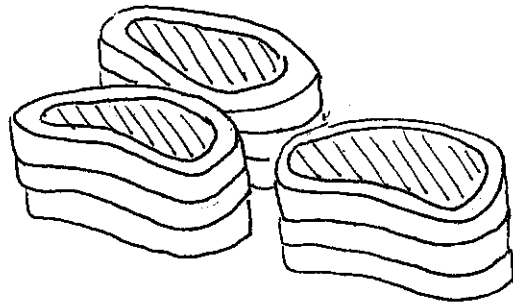


CARBON FIXATION

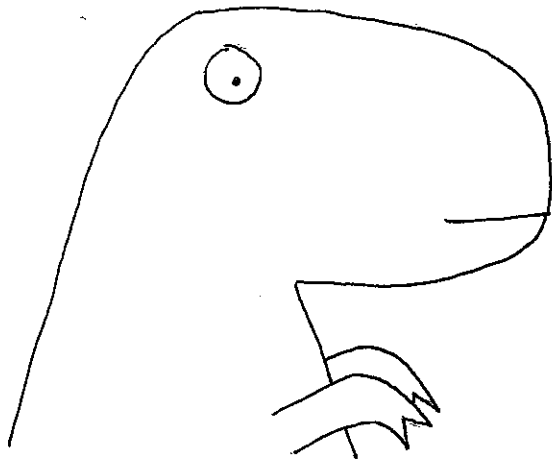
The smaller the fraction of incoming CO_2 fixed, the larger the net fractionation of carbon isotopes.



I require the leanest cut of the finest steak. You may discard the rest, Jeeves.



i.e. Those who can afford to lose the most can have the most discerning palates.



Only two left?
I guess that's lunch and dinner.



MIT OpenCourseWare
<http://ocw.mit.edu>

12.744 Marine Isotope Chemistry
Fall 2012

For information about citing these materials or our Terms of Use, visit: <http://ocw.mit.edu/terms>.