

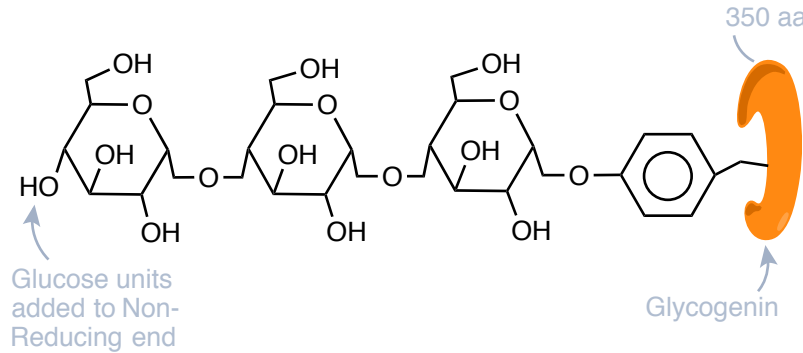
**Session 18 - Carbohydrate Synthesis**

A

- 1.) Glycogen synthesis
- 2.) Gluconeogenesis

Recall the structure of glycogen and how it is degraded

**Glycogen Structure**



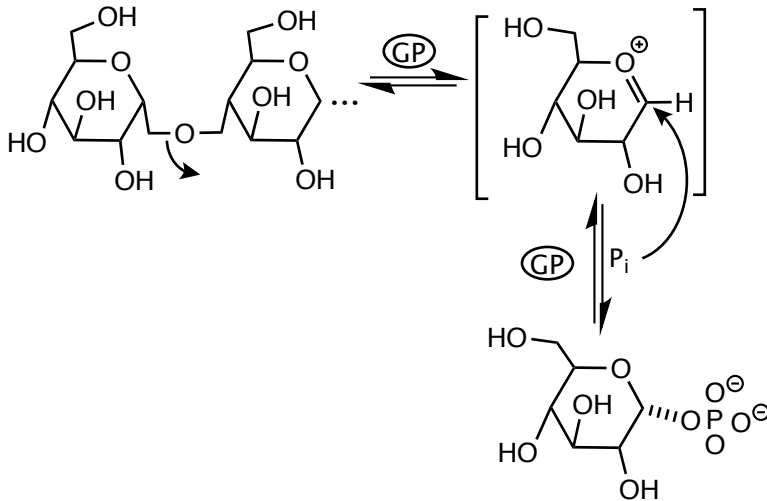
Glycogenin = enzyme, adds 1<sup>st</sup> 4-7 molecule of glucose (via UDP-glucose) to its Y-194. Then Glycogen Synthase (GS) takes over.

B

29

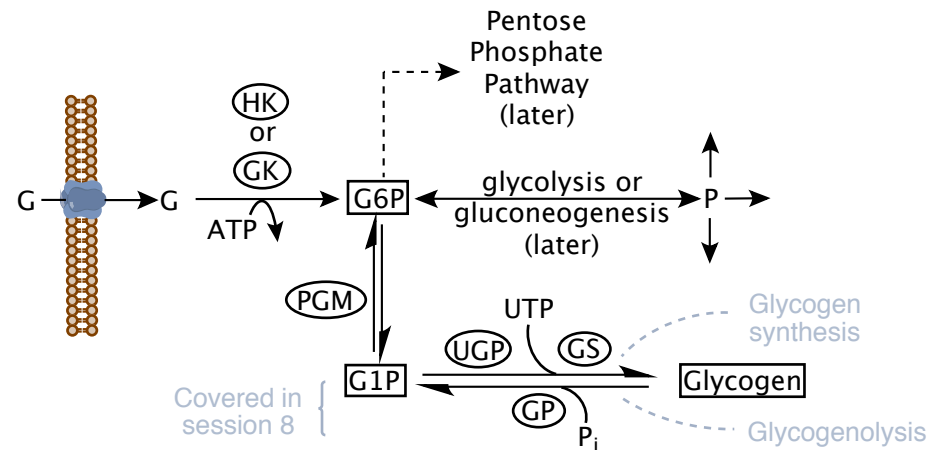
**Glucogenolysis**

C

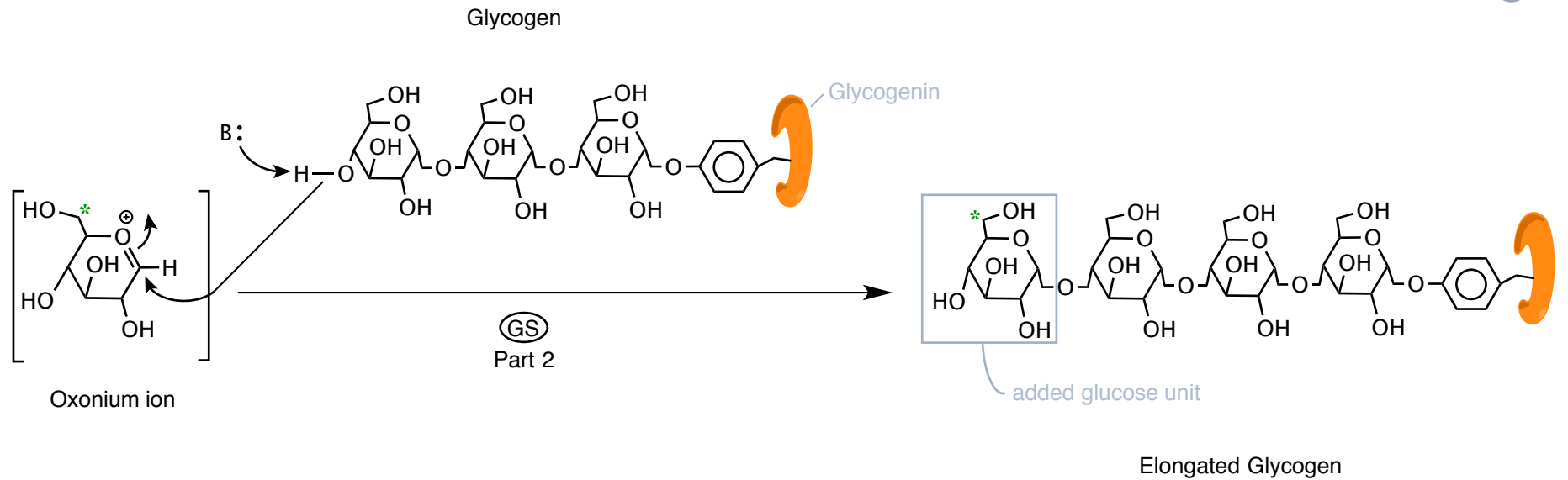
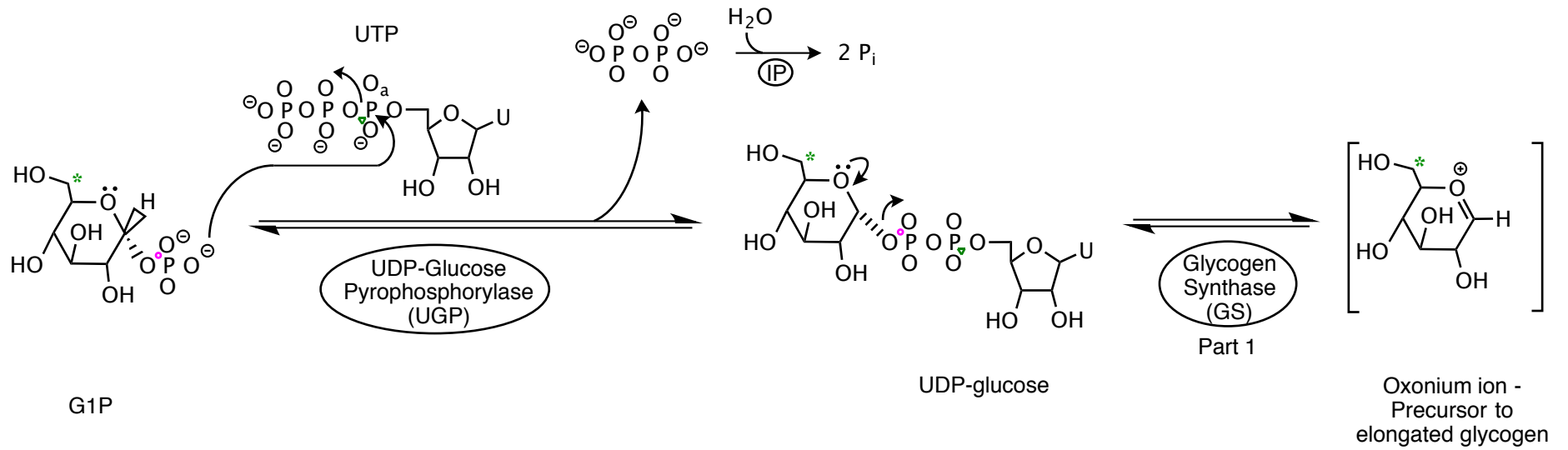


Now, recall how G1P interfaces with the mainstream of metabolism

D



# Glycogen Synthesis



MIT OpenCourseWare  
<https://ocw.mit.edu>

5.07SC Biological Chemistry I  
Fall 2013

For information about citing these materials or our Terms of Use, visit: <https://ocw.mit.edu/terms>.