

7.29 / j9.09 Cellular Neurobiology

List of Equations (plus helpful facts)

Equations you need to know for the midterm:

1) Ohms law

$$V = IR$$

$$I = gV \quad g = \text{conductance} = 1/R; \quad 1 \text{ Siemen (S)} = 1 \text{ ohm}^{-1}$$

2) Definition of capacitance

$$Q = CV \quad C = \text{capacitance - a defined constant}$$

$$Q = \text{charge}$$

3) Differentiated definition of capacitance

$$I = dQ/dt = CdV/dt$$

4) The Nernst equation:

Shown here for potassium

$$V_m = E_K = RT/zF \cdot \ln [K^+]_o/[K^+]_i$$

V_m = voltage across membrane

E_K = Nernst equilibrium potential for potassium ions

R = gas law constant

T = temp in °K

z = charge number

$$z = 1 \text{ for } K^+; \quad z = 2 \text{ for } Ca^{++}$$

F = Faraday constant = charge (coulombs) on 1 mole of protons

For $z \sim 1$; T = -25°C

$$V_m = 58 \text{ mV} \cdot \log_{10} [K^+]_o/[K^+]_i$$

5) The Goldman equation (for resting potential)

$$V_m = 58 \text{ mV} \cdot \log_{10} \frac{[K^+]_o + P_{Na}/P_K ([Na^+]_o + P_{Cl}/P_K [Cl^-]_i)}{[K^+]_i + P_{Na}/P_K [Na^+]_i + P_{Cl}/P_K [Cl^-]_o}$$

P_{Na}/P_K = Permeability of the cell membrane to sodium ions relative to its permeability to potassium ions

6) Ohm's law for membranes

$$I_m = g_k (V_m - E_K) + g_{Na} (V_m - E_{Na})$$

I_m = current through membrane inward current is defined as negative by the conventions of the textbook.

g_k = membrane conductance to potassium ions

g_{Na} = membrane conductance to sodium ions

E_{Na} = Nernst equilibrium potential for sodium ions

7) The Weighted-average equation

$$V_m = \frac{g_k E_K + g_{Na} E_{Na}}{g_k + g_{Na}}$$

This equation is derived from equation 6) above for the equilibrium condition $I_m = 0$. It describes the same situation as the Goldman Equation; it is less accuracy but easier to use experimentally. Hodgkin & Huxley use it all of the time.

8) The Hodgkin-Huxley predictive cycle

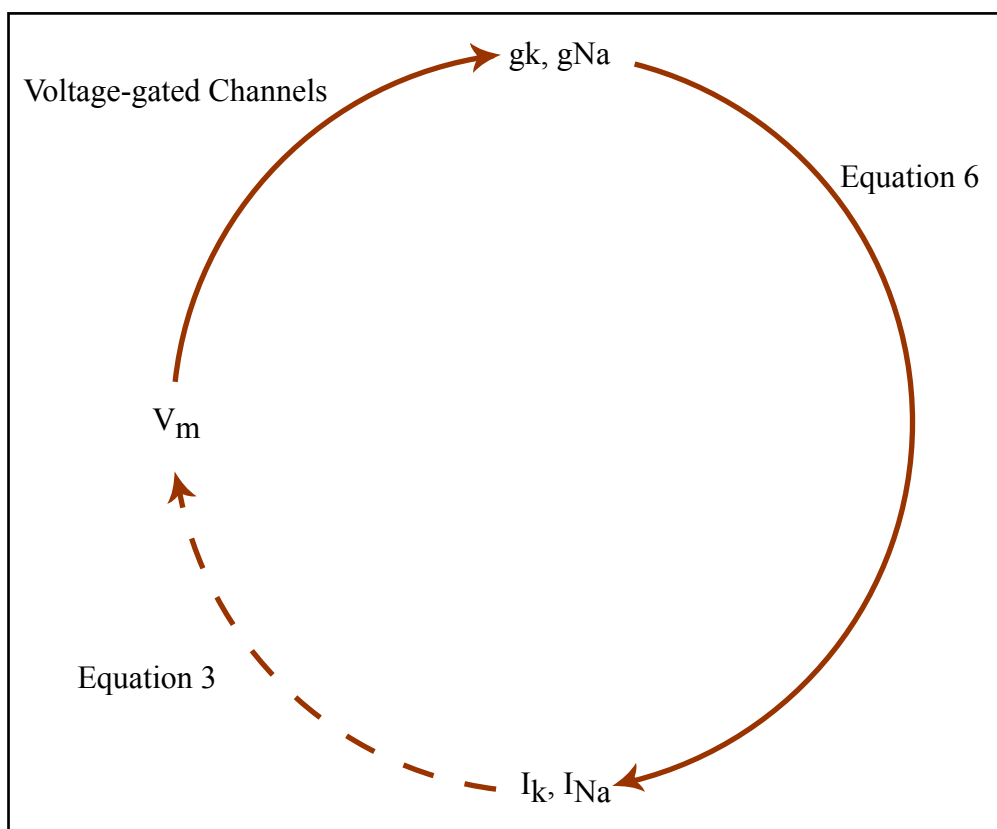


Figure by MIT OCW.

- 9) Passive spread of current in leaky cable – decrease in voltage excursion with distance

$$V(x) = V(0)e^{-x/\lambda}$$

x = distance from current source

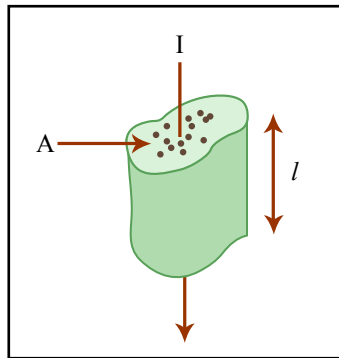
λ = space const. = distance for voltage to drop to $1/e = 37\%$ of its value at the source

- 10)

$$\lambda = \sqrt{\frac{r_m}{r_i + r_o}}$$

r_m = membrane resistance per unit length (Eg cm) of axon

- 11) For a cylindrical (with arbitrary shaped cross-section) solid, the resistance to Current flow through the cylinder



$$= R/l/A$$

= resistance

= specific resistivity a property of the material

l = length of solid

= cross sectional area of the solid

Figure by MIT OCW.

* Note that in chapter 6 only resistance = r (lower case) and resistivity = R (upper case). In other chapter R = resistance. Also, charge Q and current I become q and i in chapter 6 only. I don't understand this change in notation, but students get confused if my lectures depart from it.

- 12) Definitions for Quantal analysis

\bar{v}_1 = mean quantal size (recorded postsynaptically, measured in millivolts)

m = mean quantal content (average number of quanta per synaptic stimulation – Measured in quanta)

n = number of quanta (vesicles?) available for release at a synapse

p = probability of a given individual quantum being released at a given stimulation

When n = small – the binomial distribution applies:

13) $P(x) = \frac{n!}{x!(n-x)!} p^x (1-p)^{n-x}$

so when $n = \text{small}$ the probability of failures $P(0) = (1-p)^n$

When $n = \text{large}$, we use the Poisson distribution which you need not memorize. From this, the probability of failures ($n = \text{large}$)

14) $P(0) = e^{-m}$

Some facts. quantal analysis distinguishes between presynaptic and postsynaptic effects.

- A. Presynaptic change \rightarrow change in m . Most easily measured by measuring change in P_0 , the rate of failures in stimulated evoked synaptic transmission.
- B. Postsynaptic change \rightarrow change in $V_1 =$ change in quanta! size -most easily measured as change in peak voltage for spontaneous mini's.

MIT OpenCourseWare
<http://ocw.mit.edu>

7.29J / 9.09J Cellular Neurobiology
Spring 2012

For information about citing these materials or our Terms of Use, visit: <http://ocw.mit.edu/terms>.